

CHATEAUNEUF de GRASSE

French Riviera

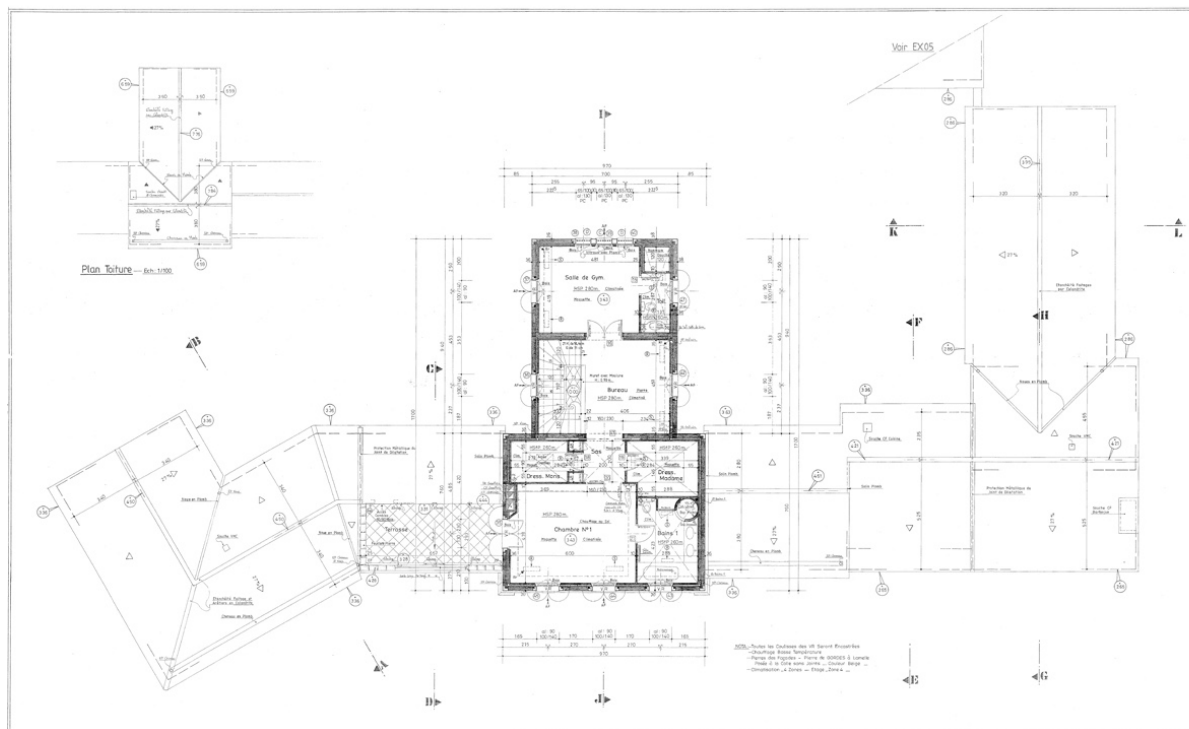
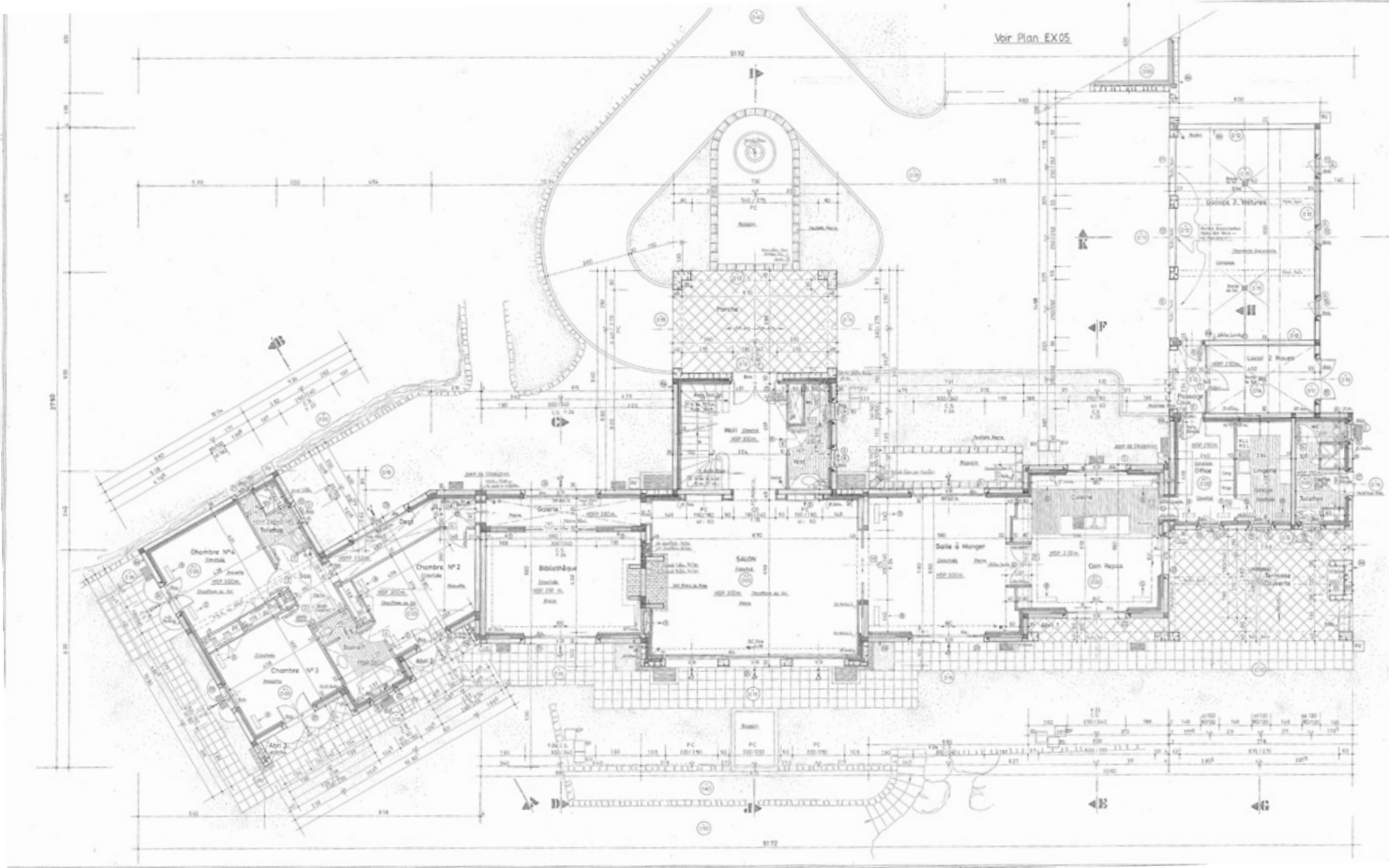


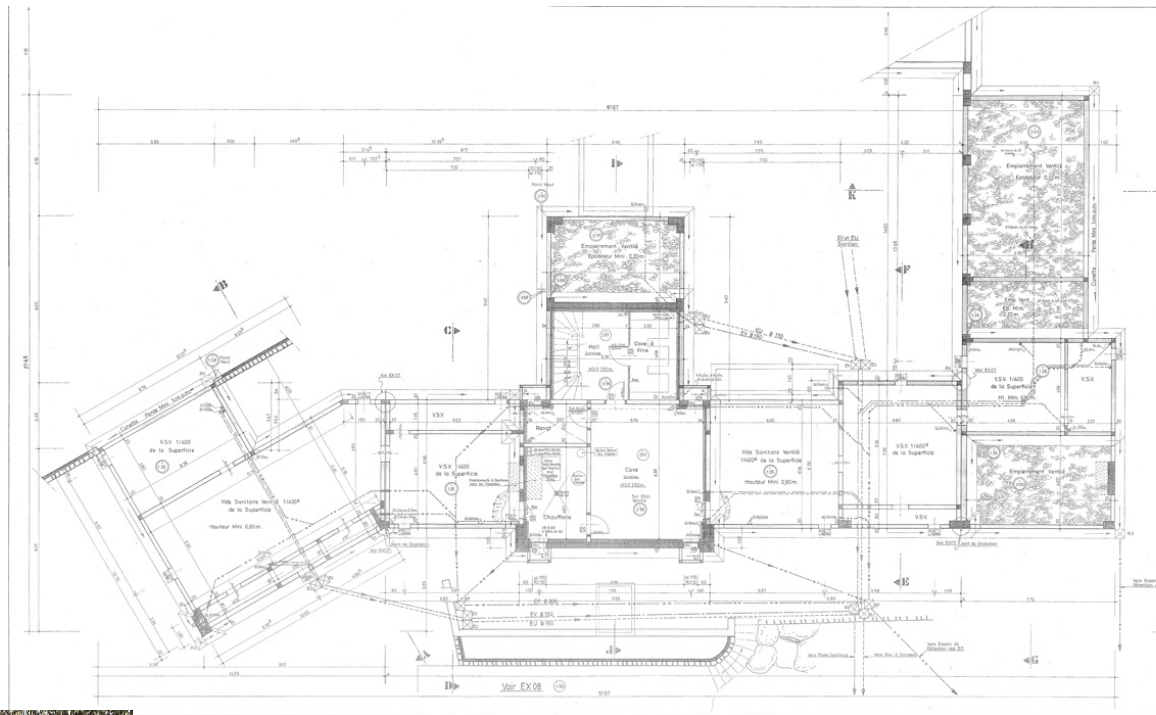
















Prestigious South facing stone

'bastide' with sea views. 25 minutes from both the Nice Airport and Cannes. This exceptional and unique property combining refinement with comfort, security over 10,000m2 of walled and fully enclosed landscaped gardens with 150 mature olive trees and 360 degree panoramic views from the Bay of Nice to Mandelieu.

The main villa, designed by Richard Sansoe, to the owners specifications, consists of over 625m2 under air conditioning and features large proportions for a living room with a cut stone fireplace and 3meters high ceilings, custom built oak library with a second cut stone fireplace, a dining room with views of the Sea and the village and mountains behind. A fully furnished Siematic all electric eat in kitchen with a pantry, additional refrigerator and freezer, a separate laundry room.

A large covered terrace with BBQ, a separate toilet and shower room. On the ground level three large bedrooms all with fitted closets with a large entry hall and 2 ½ bathrooms.

On the upper level a Master Suite with his and hers dressing rooms with two separate bathrooms with Grohe showers, Hammam and Jacuzzi plus a second bedroom or gym and a private study.

A large finished basement perfect for a media or billiards room with a large air conditioned wine cellar and cigar cave.

Three secure garages, two separate storage areas and separate parking for two cars for the guardians with a separate entrance. Guardian cottage of 60m2 with a living room, open plan kitchen, bedroom and full bathroom and toilet.

Jean Mus designed gardens and plantations. Heated 24 m tiled infinity swimming pool with Spa. Interior and exterior (perimeter) alarm systems. Entire property is fully walled and enclosed. Electronic gates.



For more details about this property please contact any GMA® Certified Agent

Pour plus de renseignements sur cette propriété, veuillez contacter un agent
Certifié GMA®

